

G

Damper



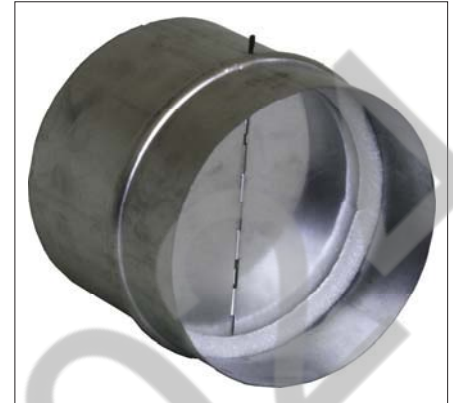
Back Draft Damper

Another name for Back draft damper is Non-Return damper. The airflow goes one direction and back draft air cannot blow back. It is a butterfly damper in the middle.

Material is galvanised sheet metal with rubber seal inside .

Code and Description

DMP-BD4	Back Draft Damper 100mm
DMP-BD5	Back Draft Damper 125mm
DMP-BD6	Back Draft Damper 150mm
DMP-BD8	Back Draft Damper 200mm
DMP-BD10	Back Draft Damper 250mm



Barrel Shaft Damper

The long shaft is for a motor which put on to be come a motorised damper. Some customers prefer to use their own motor, they only need the damper so we call as it looks Barrel Shaft Damper.

Code and Description

DMP-ISD6	Barrel Shaft Damper 150mm
DMP-ISD8	Barrel Shaft Damper 200mm
DMP-ISD10	Barrel Shaft Damper 250mm
DMP-ISD12	Barrel Shaft Damper 300mm
DMP-ISD14	Barrel Shaft Damper 350mm
DMP-ISD16	Barrel Shaft Damper 400mm





Bellmouth Starting Collar with Damper

The rapid kit allows locking of the blade and has an indicator arm to show blade position on the starting collar

Code and Description

DMP-SCD08	Starting Collar with Damper 200mm
DMP-SCD10	Starting Collar with Damper 250mm
DMP-SCD12	Starting Collar with Damper 300mm
DMP-SCD14	Starting Collar with Damper 350mm
DMP-SCD16	Starting Collar with Damper 400mm

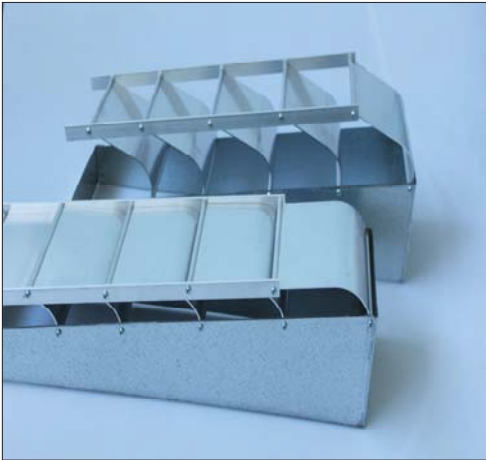


Motorised Damper

Motorised damper has a motor fixed on . This kind of damper mostly used at zone system (close or open certain area in side the house.

Code and Description

DMP-MD8	Motorised Damper 240v 200mm
DMP-MD10	Motorised Damper 240v 250mm
DMP-MD12	Motorised Damper 240v 300mm
DMP-MD14	Motorised Damper 240v 350mm
DMP-MD16	Motorised Damper 240v 400mm



Stream Splitter Dampers

The method employed to achieve a reasonably straight air flow and obtain volume control is to use a Stream Splitter Damper as SSD.

SSD should be fixed where the outlet connection to the grille joins the main supply duct in order to turn the air and provide a uniform distribution of air over the face of the grille.

Alternatively, the SSD can be made as an integral part of the register to allow direct fixing to the main duct.



Opposed Blade Dampers

Mount directly on the neck of Air Grille to achieve volume control, from full air flow to shut off.

Volume Control Dampers

**NEW
PRODUCT**



Rapid Kit Damper

You can use this kit to put on any size of starting collars or metal joiners to become a manual damper. Locking wing nut on side of blade with indicator arm to show blade angle. Suitable for starting collars, branch take-off's and Y pieces

Code and Description

DMP-RKD4	Rapid Kit Damper Blades 100mm
DMP-RKD5	Rapid Kit Damper Blades 125mm
DMP-RKD6	Rapid Kit Damper Blades 150mm
DMP-RKD7	Rapid Kit Damper Blades 175mm
DMP-RKD8	Rapid Kit Damper Blades 200mm
DMP-RKD9	Rapid Kit Damper Blades 225mm
DMP-RKD10	Rapid Kit Damper Blades 250mm
DMP-RKD12	Rapid Kit Damper Blades 300mm
DMP-RKD14	Rapid Kit Damper Blades 350mm
DMP-RKD16	Rapid Kit Damper Blades 400mm
DMP-RKD18	Rapid Kit Damper Blades 450mm
DMP-RKD20	Rapid Kit Damper Blades 500mm



Damper Blades

Code and Description

DB	Damper Blades AAmm
----	--------------------





Starting Collar with Damper

The rapid kit allows locking of the blade and has an indicator arm to show blade position on the starting collar

Code and Description	
DMP-SCD08	Starting Collar with Damper 200mm
DMP-SCD10	Starting Collar with Damper 250mm
DMP-SCD12	Starting Collar with Damper 300mm
DMP-SCD14	Starting Collar with Damper 350mm
DMP-SCD16	Starting Collar with Damper 400mm



Inline Flex Balancing Damper

Another name is Barrel damper. Purpose adjust airflow in the connected flexible duct or spiral duct. Inline damper sits between the round duct. We can manufacture oval shape or square shape.

Material is galvanised sheet metal. Round blade damper in the middle

Code and Description	
DMP-ID6	Inline Manual Damper 150mm
DMP-ID8	Inline Manual Damper 200mm
DMP-ID10	Inline Manual Damper 250mm
DMP-ID12	Inline Manual Damper 300mm
DMP-ID14	Inline Manual Damper 350mm
DMP-ID16	Inline Manual Damper 400mm

@Airlinx2024